

# A Course in Intrapartum Nursing

## Dates

### Tuesdays . . .

February 23, 2010

April 27, 2010

June 22, 2010

August 24, 2010

October 26, 2010

December 7, 2010

## Times

8:00 a.m. - 4:00 p.m.

## Place

SSM St. Mary's Health Center

6420 Clayton Road

St. Louis, MO 63117

to be held in the  
Kohler Auditorium

## Fee

\$15.00 per day or

\$75.00 for the entire program

Lunch is on your own

## For Information Call

Pam Randazzo at (314) 768-8537

## Curriculum

### Day 1 - February 23, 2010

Pregnancy - What's the Big Deal?  
Overview of the Labor Process  
Labor Support  
Newborn Transition and Initial Care

### Day 2 - April 27, 2010

Intrapartum Pain Management  
Second Stage Management  
Lactation  
Newborn Assessment

### Day 3 - June 22, 2010

Neonatal Surgical Emergencies  
Operating Room Principles  
Care of the Cesarean Section Patient  
Complications of Obesity in Pregnancy

### Day 4 - August 24, 2010

Induction of Labor  
Hypertensive Disorders of Pregnancy  
Preterm Birth  
Obstetrical Hemorrhage

### Day 5 - October 26, 2010

Managing Complications in L&D  
Precipitous birth, cord prolapse, shoulder  
dystocia, uterine rupture, and amniotic  
fluid emboli  
Grief Support  
Respiratory Distress in the Newborn

### Day 6 - December 7, 2010

Perinatal Infections/Sexually Transmitted Diseases  
Diabetes in Pregnancy  
Trauma/Violence in Pregnancy  
Hypoglycemia in the Early Newborn Period

---

## Registration Form

Name: \_\_\_\_\_

Phone: \_\_\_\_\_

Employer: \_\_\_\_\_

## Fee

\_\_\_\_\_ Entire Program = \$75.00

\_\_\_\_\_ Day 1 = \$15.00

\_\_\_\_\_ Day 2 = \$15.00

\_\_\_\_\_ Day 3 = \$15.00

\_\_\_\_\_ Day 4 = \$15.00

\_\_\_\_\_ Day 5 = \$15.00

\_\_\_\_\_ Day 6 = \$15.00

Make checks payable to:

**SSM St. Mary's Health Center**

Attn: Perinatal Outreach

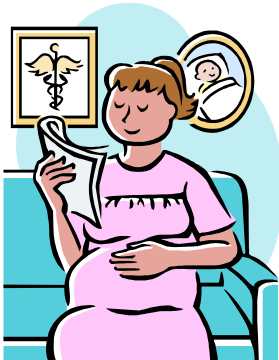
6420 Clayton Road

St. Louis, MO 63117

Presented by  
Perinatal Outreach Education  
SSM St. Mary's Health Center

6420 Clayton Road  
St. Louis, MO 63117

Promoting healthy outcomes for  
moms and babies!



SSM St. Mary's Health Center is an approved provider of continuing nursing education by the Missouri Nurses Association, an accredited approver by the American Nurses Credentialing Center's Commission on Accreditation.

5.0 contact hours available each day

Partial funding for this program provided by the Illinois Department of Public Health.

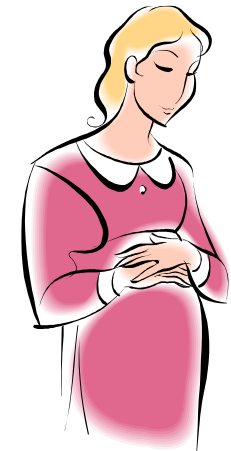
Directions to  
SSM St. Mary's Health Center

6420 Clayton Road  
St. Louis, MO 63117  
(314) 768-8000

Park in the Oakland Avenue Garage behind the 1027 Medical Building. Cross the street at the crosswalk and enter on the groundfloor. Take main elevators to second floor and follow the signs to Kohler Auditorium.

Course presented by  
Perinatal Outreach  
SSM St. Mary's Health Center

# A Course in Intrapartum Nursing



## 2010

This didactic educational program is designed to assist registered nurses in their pursuit of healthy outcomes for mothers and babies.