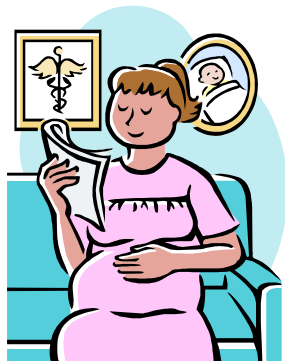


Presented by
Perinatal Outreach Education
SSM St. Mary's Health Center

6420 Clayton Road
St. Louis, MO 63117

Promoting healthy outcomes for
moms and babies!



SSM St. Mary's Health Center is an approved provider of continuing nursing education by the Missouri Nurses Association, an accredited approver by the American Nurses Credentialing Center's Commission on Accreditation.

5.0 contact hours available each day

Partial funding for this program provided by the Illinois Department of Public Health.

Directions to
SSM St. Mary's Health Center

6420 Clayton Road
St. Louis, MO 63117
(314) 768-8000

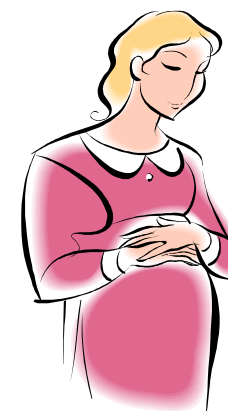
Park in the Oakland Avenue Garage between the 1027 Medical Building and Pulaski Bank. Cross the street at the crosswalk and enter on the groundfloor. Take main elevators to second floor and follow the signs to Kohler Auditorium.

There will be a \$5.00 fee to park for the day in this lot



Course presented by
Perinatal Outreach
SSM St. Mary's Health Center

A Course in Intrapartum Nursing



2012

This didactic educational program is designed for new registered nurses in the perinatal setting or as a refresher for the experienced nurse.

A Course in Intrapartum Nursing

Dates

Tuesdays . . .

February 28, 2012
April 24, 2012
June 26, 2012
August 28, 2012
October 30, 2012
December 4, 2012

Times

8:00 a.m. - 4:00 p.m.

Place

SSM St. Mary's Health Center
6420 Clayton Road
St. Louis, MO 63117

in Kohler Auditorium

Fee

\$15.00 per day

Lunch is on your own

For Information Call

Pam Randazzo at (314) 768-8537

Curriculum

Day 4 - February 28, 2012

Induction of Labor
Hypertensive Disorders of Pregnancy
Preterm Birth
Obstetrical Hemorrhage

Day 5 - April 24, 2012

Managing Complications in L&D
Precipitous birth, cord prolapse, shoulder dystocia, uterine rupture, and amniotic fluid emboli
Grief Support
Respiratory Distress in the Newborn
How to Communicate When Things Go Wrong

Day 6 - June 26, 2012

Perinatal Infections/Sexually Transmitted Diseases
Diabetes in Pregnancy
Trauma/Violence in Pregnancy
Hypoglycemia in the Early Newborn Period

Day 1 - August 28, 2012

Pregnancy - What's the Big Deal?
Abnormalities of the Placenta
Overview of the Labor Process
Blood Gas Interpretation
Newborn Transition and Initial Care
Breast Feeding 101

Day 2 - October 30, 2012

Intrapartum Pain Management
Labor Support
Second Stage Management

Newborn Assessment

Day 3 - December 4, 2012

Surgical Conditions of the Newborn
Operating Room Principles
Care of the Cesarean Section Patient
Complications of Obesity in Pregnancy
Antenatal Testing

Registration Form

Name: _____

Phone: _____

Employer: _____

Fee

___ Day 4 - \$15.00

___ Day 5 - \$15.00

___ Day 6 - \$15.00

___ Day 1 - \$15.00

___ Day 2 - \$15.00

___ Day 3 - \$15.00

Make checks payable to:

SSM St. Mary's Health Center

Attn: Perinatal Outreach

6420 Clayton Road

St. Louis, MO 63117

REMINDER: Classroom temperature varies. Please bring a sweater or light jacket with you to ensure your comfort.