



Cardinal Glennon

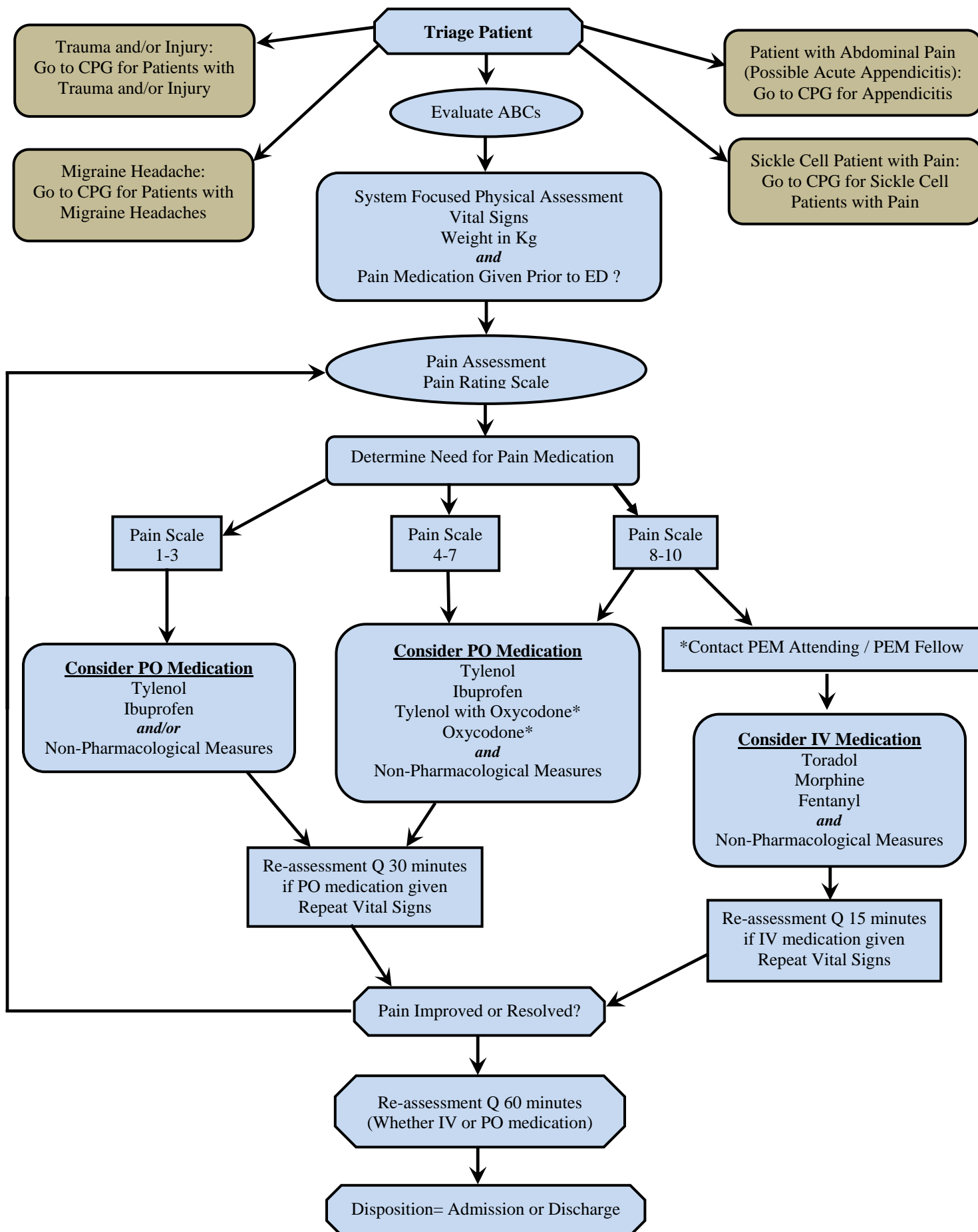
SSM Cardinal Glennon Children's Medical Center

# Complete Pain Pathway

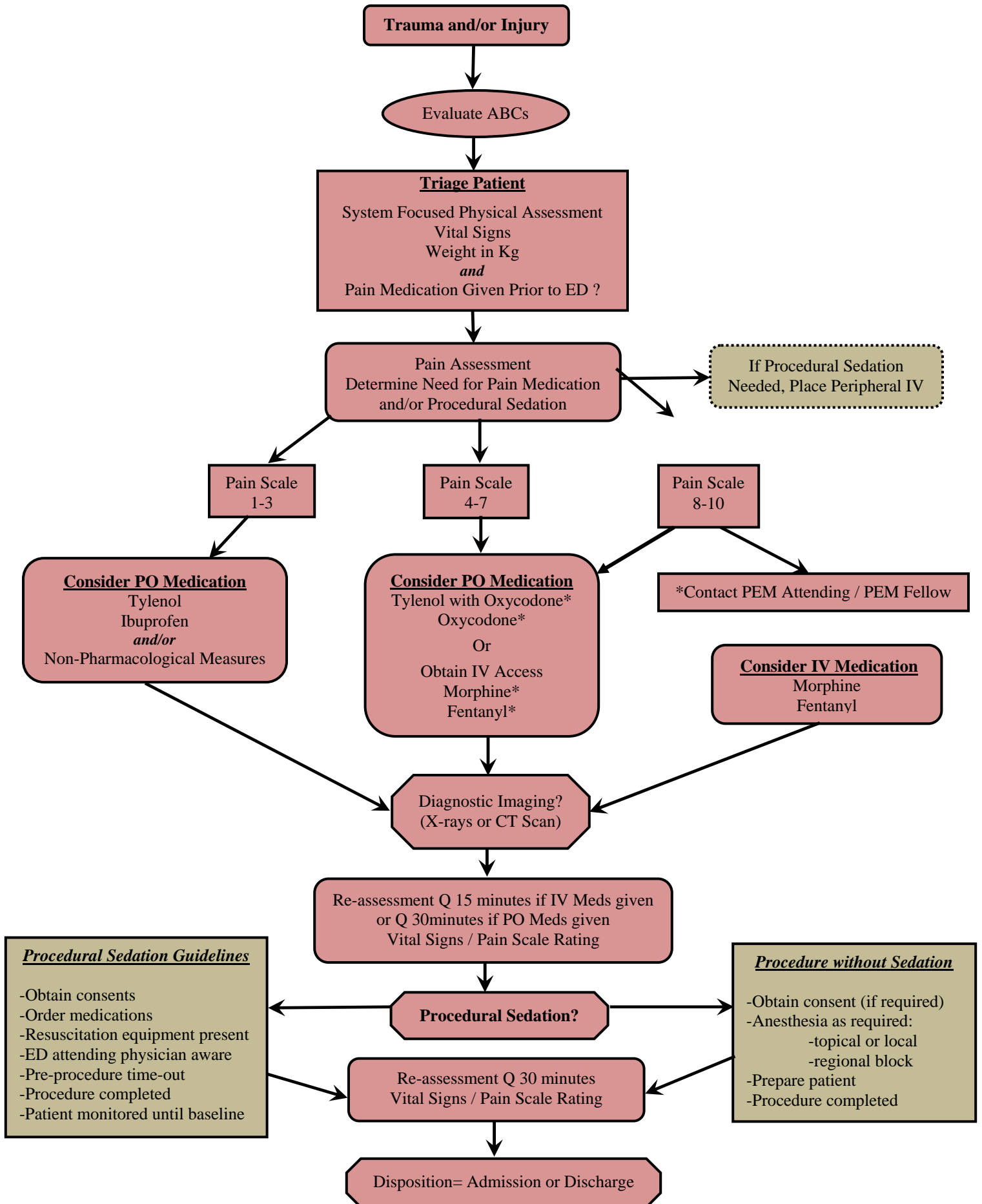
Division of Pediatric Emergency Medicine

Approval Date June 2009

# Pain Management in Patients Without Trauma or Injury Emergency Department Clinical Practice Guideline (CPG)



# Pain Management in Patients with Trauma and/or Injury Emergency Department Clinical Practice Guideline (CPG)



## Emergency Department Pain Medications

### Non-Steroidal Anti-Inflammatory Medications

#### Oral Medications

Acetaminophen	10-15 mg/kg PO every 4 hours	-Max Dose 4 grams/24 hours
Ibuprofen	10 mg/kg every PO 6-8 hours	-Max Dose 800 mg/dose or 3.2 grams/24 hours
Naproxen	5 mg/kg every PO 12 hours	

#### Parenteral Medications

Ketorolac	0.5 mg/kg IV single dose (Max dose 30 mg)	- Children 2-16 years of age only.  - Should not be used in patients with abdominal pain and concern for acute appendicitis.  -Should not be used in any patient that may go to the OR.
-----------	---	---

## Emergency Department Pain Medications

### Narcotic Medications

#### Oral Medications

Codeine (Acetaminophen) ( <i>Elixir, T#1,2,3,4</i> )	0.5-1 mg/kg PO every 4-6 hours	-Max Dose 60 mg/dose
Hydrocodone (Acetaminophen) ( <i>Lortab Elixir, Lorcet, Vicodin</i> )	0.2 mg/kg PO every 4-6 hours	-Not to exceed 6 doses per day.
Oxycodone ( <i>Roxicodone, Oxycontin</i> )	0.2 mg/kg PO every 4-6 hours	-Max Dose 5 mg/dose
Oxycodone (Acetaminophen) ( <i>Tylox, Roxilox, Percocet</i> )	0.2 mg/kg PO every 4-6 hours	-Max Dose 5 mg/dose
Hydromorphone ( <i>Dilaudid</i> )	0.06 mg/kg PO every 4-6 hours	-Max Dose 4 mg/dose

\*\* Doses of acetaminophen in combination opioids / NSAID preparations must be adjusted to the patient's body weight.

#### Parenteral Medications

Morphine	0.1-0.2 mg/kg IV every 2-4 hours	-Max Dose 15 mg/dose
Fentanyl	1-2 mcg/kg/dose IV every 0.5-1 hour	- Children 18-36 months may require 2-3 mcg/kg/dose.

## **Common Emergency Department Procedures (Potential Means of Pain Management for Procedure)**

### **Incision and Drainage**

Non-Pharmacological Measures

EMLA

Topical Ethyl Chloride Spray

Local Infiltration with Lidocaine

Procedural Sedation

### **Laceration Repair**

Non-Pharmacological Measures

Topical XAP

Local Infiltration with Lidocaine

Nerve/Digital Block with Lidocaine

Procedural Sedation

### **Lumbar Puncture**

Non-Pharmacological Measures

EMLA

Oral Sucrose for Infants

Local Infiltration with Lidocaine

Procedural Sedation

### **Fracture Reduction**

Non-Pharmacological Measures

Procedural Sedation

Hematoma Block with Lidocaine